

PTFE, PFA, PVDF, PP LINED PIPE & FITTINGS.

ANSI # 150.

European Edition

The information contained in this publication is intended as a guide to customers, and is freely given in good faith. Whilst every care has been taken in its preparation, the company does not accept responsibility for inaccuracies. Development is continuous. Drawings and specifications may be modified from time to time without notice. Attention is drawn to the company's conditions of sale.

FLUOROCARBON LININGS FLUOROLINE®

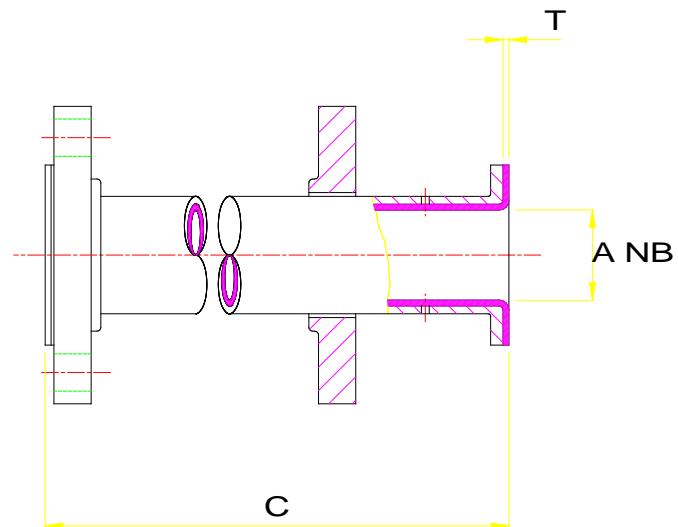
PIPE: Fluoroline T

15 - 600 NPS

ANSI # 150

Steel Fabrication

Fluoroline T PTFE: ASTM D 4894 Type IV & D
4895 Type III



A mm	C mm max.	C mm min.	T		1m ~kg	+ 1m ~kg
			STD	HD		
15	3,000	90	1.5	2	2	1.5
20	3,000	90	1.5	2	3	2.1
25	6,000	90	2.13	3.18	5.2	3.1
32	6,000	90	2.13	3.18	6.7	3.9
40	6,000	95	2.13	3.18	7.5	5
50	6,000	110	2.13	3.18	10.8	6.6
65	6,000	110	2.13	3.18	14.8	7.3
80	6,000	120	2.16	3.18	20	12.9
100	6,000	125	N.A.	4.25	29.8	18.6
125	4,500	140	N.A.	4.5	37	23
150	3,000	140	3.76	5.25	48.7	33.8
200	3,000	145	4.25	6.75	75.5	52
250	3,000	155	5.25	7.75	98.4	62
300	3,000	160	6.35	9	120	82
350	2,000	180	6.5	10	159	83.4
400	2,000	180	6.5	10	192	95.6
450	2,000	190	6.5	10	214	108
500	2,000	200	6.5	10	255	120.3
600	2,000	210	6.5	10	335	144.7

FLUOROCARBON LININGS FLUOROLINE®

PIPE: Fluoroline K & P

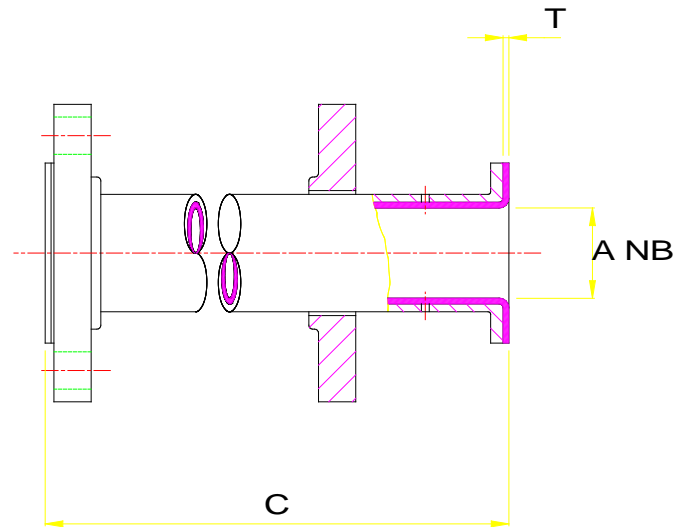
25 - 300 NPS

ANSI # 150

Steel Fabrication

Fluoroline K - PVDF - ASTM D 3222

Fluoroline P - Polypropylene - ASTM D 4101



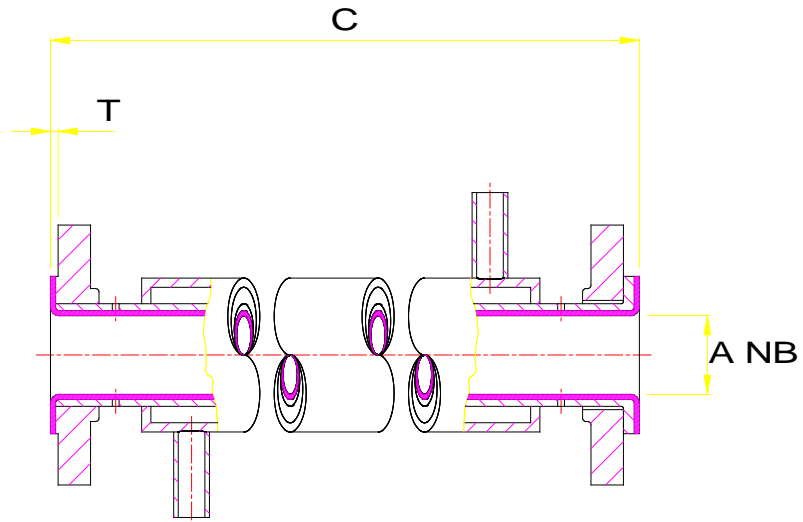
A mm	C mm max.	C mm min	T mm		1m ~kg	+ 1m ~ kg
			PVDF	PP		
25	6,000	90	2.54	3.81	5.2	3.1
40	6,000	95	2.54	4.06	7.5	5
50	6,000	110	2.54	4.45	10.8	6.6
80	6,000	120	2.54	4.45	20	12.9
100	6,000	125	3.18	5.33	29.8	18.6
150	6,000	140	3.68	5.6	48.7	33.8
200	6,000	145	4.06	5.6	75.5	52
250	6,000	155	5.6	6.35	98.4	62
300	6,000	160	6.35	6.35	120.1	82

FLUOROCARBON LININGS FLUOROLINE®

Jacketed Pipe PTFE 25 -300

ANSI # 150

Steel Fabrication
Fluoroline T PTFE: ASTM D 4894 Type
IV & D 4895 Type III



A mm	C mm max.	T mm		1m ~kg	+ 1m ~ kg
		STD	HD		
25	6,000	2.13	3.18	10.2	7.1
40	6,000	2.13	3.18	14	10.4
50	6,000	2.13	3.18	23	18
80	6,000	2.16	3.18	37	29
100	6,000	2.67	4.25	59	47
150	3,000	3.76	5.25	87	71
200	3,000	4.25	6.75	127	103
250	3,000	5.25	7.75	166	128
300	3,000	6.35	8.75	203	164

Jackets for 25, 40, 50, 80, 100 are schedule 40, and for 150, 200, 250, 300 are schedule 30.

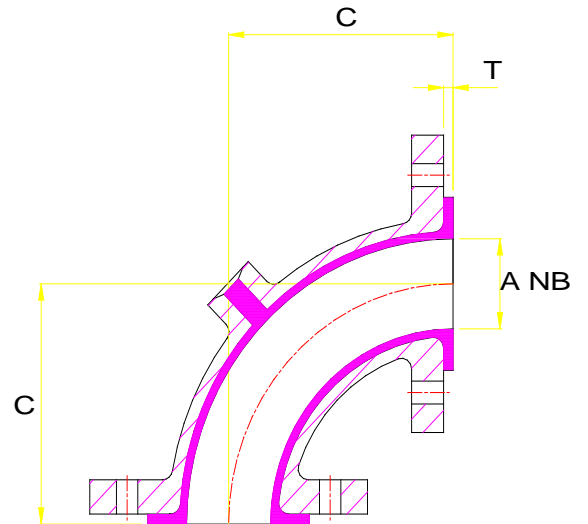
Minimum pipe length 500 mm.

FLUOROCARBON LININGS FLUOROLINE®

90 Elbow 15 – 300

ANSI #150

S.G. Iron - EN-GJS-400-18-LT
 Cast Steel - ASTM A 216 WCB
 Steel Fabrication (PTFE Lined*)
 Fluoroline T PTFE: ASTM D 4895 Type III
 Fluoroline T - PFA - ASTM D 3307 type II
 Fluoroline K - PVDF - ASTM D 3222
 Fluoroline P - Polypropylene - ASTM D 4101



A mm	C mm	T mm	~kg
15*	65	1.5	1.9
20*	75	1.5	2
25	89	5.6	2.4
40	102	5.6	3.9
50	114	5.6	6.4
80	140	5.6	12
100	165	6.4	19
150	203	7.1	34
200	229	7.9	57
250	279	7.9	91
300	305	9.5	110

FLUOROCARBON LININGS FLUOROLINE®

90 Elbow 350 - 600

ANSI # 150.

Two Piece, Long Radius

Fluoroline T PTFE: ASTM D 4894 Type IV & D 4895 Type III
Steel - ASTM A 234 gr. WPB, ASTM A 105.

A mm	C mm	T mm	~ kg
350	546	10	125
400	610	10	150
450	673	10	190
500	737	10	245
600	864	10	335

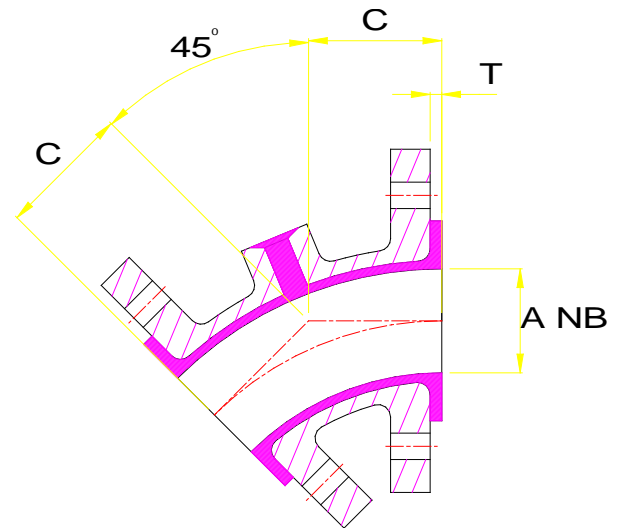
FLUOROCARBON LININGS FLUOROLINE®

45 Elbow 15 - 300

ANSI # 150

S.G. Iron to EN-GJS-400-18-LT
Cast Steel to ASTM A 216 WCB
Steel Fabrication (PTFE Lined*)
ASTM A 234 gr. WPB, ASTM A 105

Fluoroline T PTFE: ASTM D 4895 Type III
Fluoroline T - PFA - ASTM D 3307 type II
Fluoroline K - PVDF - ASTM D 3222
Fluoroline P - Polypropylene - ASTM D 4101



A mm	C mm	T mm	~kg
15*	45	1.5	1.7
20*	45	1.5	1.9
25	45	5.6	2
40	57	5.6	3.2
50	64	5.6	4.8
80	76	5.6	9.8
100	102	6.4	17
150	127	7.1	29
200	140	7.9	50
250	165	7.9	73
300	190	9.5	87
350*	190	10	99
400*	203	10	116
450*	216	10	139
500*	241	10	167
600*	279	10	234

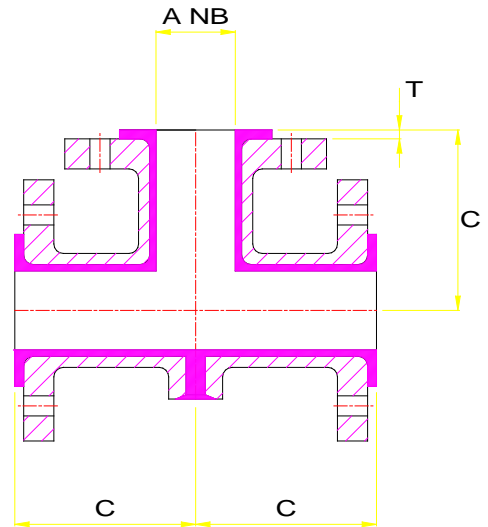
FLUOROCARBON LININGS FLUOROLINE®

Equal Tee 15 - 300

ANSI # 150

S.G. Iron - EN-GJS-400-18-LT
Cast Steel - ASTM A 216 WCB
Steel Fabrication

Fluoroline T - PFA - ASTM D 3307 type II
Fluoroline K - PVDF - ASTM D 3222
Fluoroline P - Polypropylene - ASTM D 4101



A mm	C mm	T mm	~kg
15*	65	2.9	2
20*	75	2.9	2.8
25	89	5.6	4.5
40	102	5.6	6.4
50	114	5.6	8.9
80	140	5.6	18.2
100	165	6.4	30
150	203	7.1	55
200	229	7.9	82
250	279	7.9	132
300	305	9.5	181

FLUOROCARBON LININGS FLUOROLINE®

Equal Tee 350 - 600

ANSI # 150

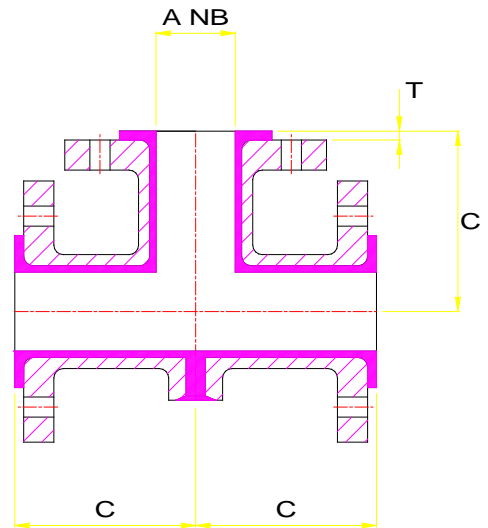
Steel Fabrication

Body Plate: BS 1501-151-430A

Tube: API 5L gr. B

Flange: ASTM A 105

Fluoroline T PTFE: ASTM D 4894 Type IV



A mm	C mm	T mm	~kg
350	356	10	315
400	381	10	380
450	419	10	415
500	457	10	480
600	559	10	630

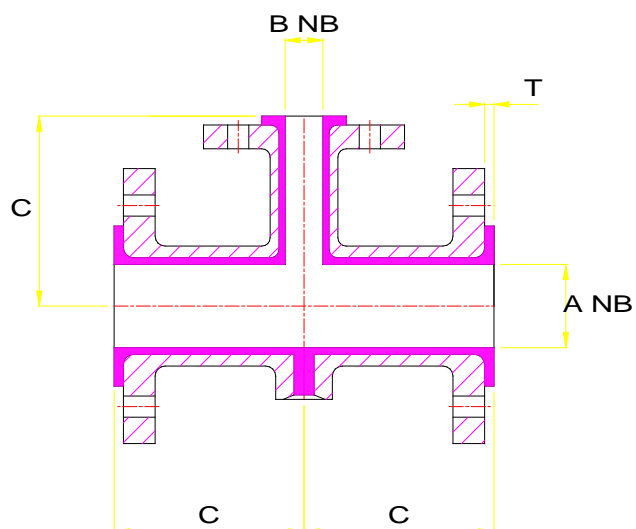
FLUOROCARBON LININGS FLUOROLINE®

Reducing Tee 25 - 150

ANSI # 150

S.G. Iron - EN-GJS-400-18-LT
Cast Steel - ASTM A 216 WCB
Steel Fabrication
Body Plate: BS 1501-151-430A
Tube: API 5L gr. B
Flange: ASTM A 105

Fluoroline T - PFA - ASTM D 3307 type II
Fluoroline K - PVDF - ASTM D 3222
Fluoroline P - Polypropylene -to ASTM D 4101



A mm	B mm	C mm	T mm	~kg
25	15	89	5.6	4
25	20	89	5.6	4.5
40	15	102	5.6	6
40	20	102	5.6	6.5
40	25	102	5.6	6.5
50	20	114	5.6	7
50	25	114	5.6	8
50	40	114	5.6	9
80	25	140	5.6	14
80	40	140	5.6	15
80	50	140	5.6	16
100	25	165	6.4	23
100	40	165	6.4	25
100	50	165	6.4	27
100	80	165	6.4	29
150	25	203	7.1	40
150	40	203	7.1	44
150	50	203	7.1	47
150	80	203	7.1	50
150	100	203	7.1	53

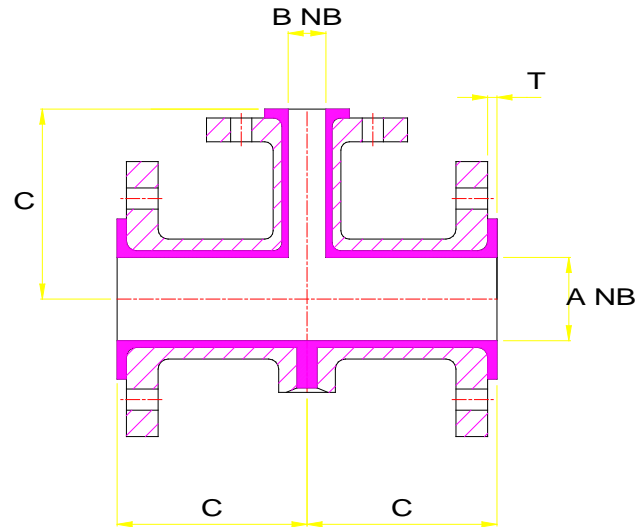
FLUOROCARBON LININGS FLUOROLINE®

Reducing Tee 200 - 300

ANSI # 150

S.G. Iron - EN-GJS-400-18-LT
Cast Steel - ASTM A 216 WCB
Steel Fabrication
Body Plate: BS 1501-151-430A
Tube: API 5L gr. B
Flange: ASTM A 105

Fluoroline T - PFA - ASTM D 3307 type II
Fluoroline K - PVDF - ASTM D 3222
Fluoroline P - Polypropylene -to ASTM D 4101



A mm	B mm	C mm	T mm	~kg
200	25	229	7.9	68
200	40	229	7.9	70
200	50	229	7.9	72
200	80	229	7.9	74
200	100	229	7.9	77
200	150	229	7.9	80
250	100	279	7.9	112
250	150	279	7.9	114
250	200	279	7.9	120
300	100	305	9.5	150
300	150	306	9.5	155
300	200	306	9.5	165
300	250	306	9.5	174

FLUOROCARBON LININGS FLUOROLINE®

Reducing Tee 350 - 500

ANSI # 150

Steel Fabrication

Body Plate: BS 1501-151-430A

Tube: API 5L gr. B

Flange: ASTM A 105

Fluoroline T PTFE: ASTM D 4894 Type IV

A mm	B mm	C mm	T mm	~kg
350	300	356	10	310
	250			300
	200			290
	150			205
	100			200
400	350	381	10	380
	300			365
	250			355
	200			290
	150			235
	100			250
450	400	419	10	450
	350			
	300			
	250			
	200			
	150			
	100			
500	450	457	10	510
	400			
	350			
	300			
	250			
	200			
	150			
	100			

FLUOROCARBON LININGS FLUOROLINE®

Reducing Tee 600

ANSI # 150

Steel Fabrication

Body Plate: BS 1501-151-430A

Tube: API 5L gr. B

Flange: ASTM A 105

Fluoroline T PTFE: ASTM D 4894 Type IV

A mm	B mm	C mm	T mm	~kg
600	500	559	10	610
	450			
	400			
	350			
	300			
	250			
	200			
	150			
	100			

FLUOROCARBON LININGS FLUOROLINE®

Concentric Reducer 25 - 300

ANSI # 150

S.G. Iron - EN-GJS-400-18-LT

Cast Steel - ASTM A 216 WCB

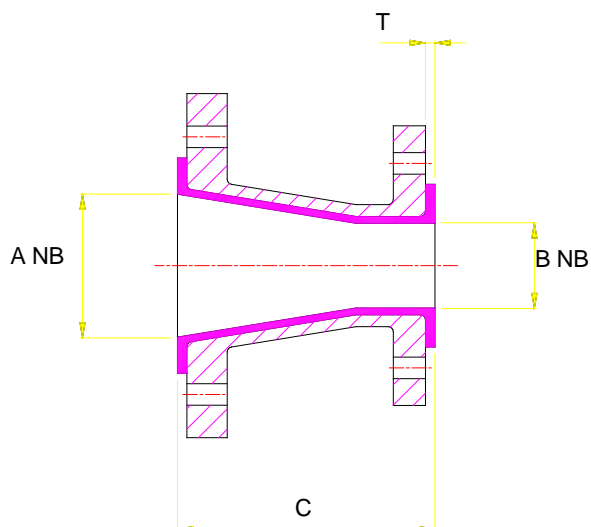
Steel Fabrication

Fluoroline T PTFE: ASTM D 4895 Type III

Fluoroline T - PFA - ASTM D 3307 type II

Fluoroline K - PVDF - ASTM D 3222

Fluoroline P - Polypropylene - ASTM D 4101



A mm	B mm	C mm	T mm	~kg
25	15	114	3	2
25	20	114	3	2
40	15	114	5.6	3
40	20	114	5.6	3
40	25	114	5.6	3
50	25	127	5.6	4
50	40	127	5.6	5
65	40	140	3	5.5
80	25	152	5.6	6
80	40	152	5.6	7
80	50	152	5.6	8
80	65	152	5.6	9
100	40	178	6.4	10
100	50	178	6.4	11
100	80	178	6.4	13
150	40	229	7.1	19
150	50	229	7.1	19
150	80	229	7.1	20
150	100	229	7.1	24
200	100	279	7.9	24
200	150	279	7.9	35
250	100	305	7.9	48
250	150	305	7.9	48
250	200	305	7.9	57
300	150	356	9.5	75
300	200	356	9.5	77
300	250	356	9.5	86

Tapped holes on cast steel WCB items on flange B only

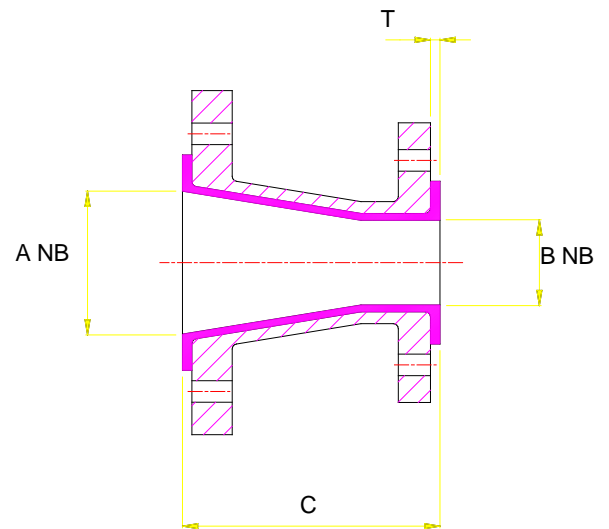
FLUOROCARBON LININGS FLUOROLINE®

Concentric Reducer 350 - 600

ANSI # 150

Steel Fabrication - ASTM A 234
ASTM A 105

Fluoroline T PTFE: ASTM D 4894 Type IV



A mm	B mm	C mm	T mm	~kg
350	300	406	10	80
400	350	457	10	115
450	400	483	10	157
500	450	508	10	225
600	500	610	10	300

Reductions may be achieved by the use of combined reducers and reducing flanges. The overall length would be that of the reducer plus the reducing flange thickness.

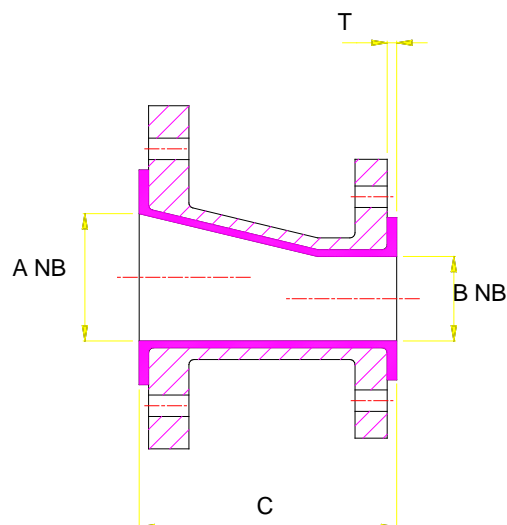
FLUOROCARBON LININGS FLUOROLINE®

Eccentric Reducer 25 - 300

ANSI # 150

S.G. Iron - EN-GJS-400-18-LT
Cast Steel - ASTM A 216 WCB
Steel Fabrication - ASTM A 234,
ASTM A 105

Fluoroline T PTFE: ASTM D 4895 Type III
Fluoroline T - PFA - ASTM D 3307 type II
Fluoroline K - PVDF - ASTM D 3222
Fluoroline P - Polypropylene - ASTM D 4101



A mm	B mm	C mm	T mm	~kg
25	15	114	3	2
25	20	114	3	2
40	15	114	5.6	3
40	20	114	5.6	3
40	25	114	5.6	3
50	25	127	5.6	4
50	40	127	5.6	5
65	40	140	3	5.5
80	25	152	5.6	6
80	40	152	5.6	7
80	50	152	5.6	8
80	65	152	5.6	9
100	40	178	6.4	10
100	50	178	6.4	11
100	65	178	6.4	12
100	80	178	6.4	13
150	40	229	7.1	19
150	80	229	7.1	20
150	100	229	7.1	24
200	100	279	7.9	24
200	150	279	7.9	35
250	100	305	7.9	48
250	150	305	7.9	48
250	200	305	7.9	57
300	200	356	9.5	77
300	250	356	9.5	86

Tapped holes on cast steel WCB items on flange B only

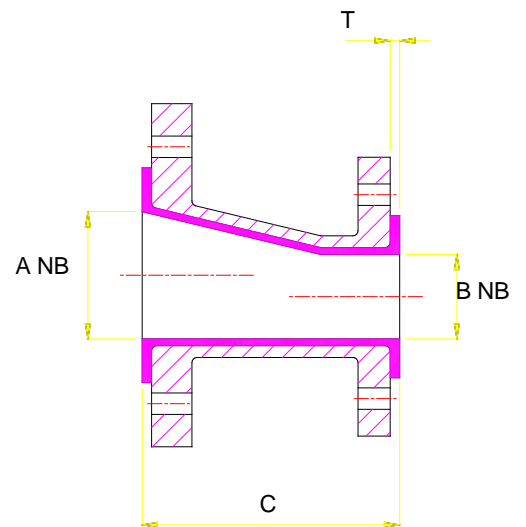
FLUOROCARBON LININGS FLUOROLINE®

Eccentric Reducer 350 – 600

ANSI # 150

Steel Fabrication - ASTM A 234,
ASTM A 105

Fluoroline T PTFE: ASTM D 4894 Type



A mm	B mm	C mm	T mm	~kg
350	300	406	10	80
400	350	457	10	115
450	400	483	10	160
500	450	508	10	225
600	500	610	10	300

Reductions may be achieved by the use of combined reducers and reducing flanges. The overall length would be that of the reducer plus the reducing flange thickness.

FLUOROCARBON LININGS FLUOROLINE®

Instrument Tee 25 - 300

ANSI # 150

S.G. Iron to EN-GJS-400-18-LT

Steel Fabrication

Body plate: BS 1501 - 151 - 430A

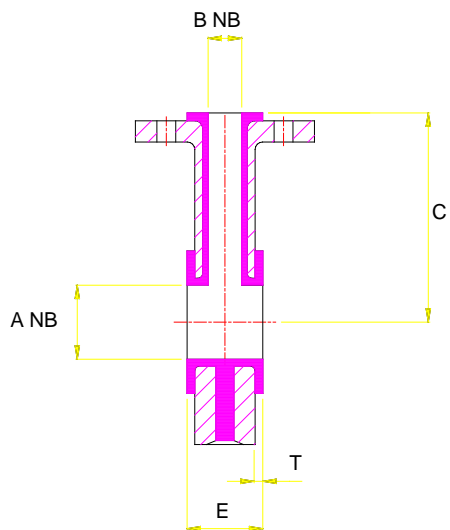
Tube: API 5L Gr. B

Flange: ASTM A 105N

Fluoroline T - PFA - ASTM D 3307 type II

Fluoroline K - PVDF - ASTM D 3222

Fluoroline P - Polypropylene - ASTM D 4101



A	C	T	E	~kg	E	~kg	E	~kg	E	~kg	E	~kg	E	~kg
	mm	mm	mm		mm		mm		mm		mm		mm	
			x 15	x 15	x 20	x 20	x 25	x 25	x 32	x 32	x 40	x 40	x 50	x 50
25	89	5.6	51	4.2	51	4.5	51	2						
40	102	5.6	51	5.4	51	5.7	51	2.5	76	3.7	76	8.5		
50	141	5.6	51	6.8	51	7	51	3.3	76	4.9	76	11		5.6
80	160	5.6	51	9	51	9	51	4.3	76	6.4	76	15	89	7.4
100	179	5.6	51	10	51	10.2	51	5.5	76	8.2	76	16	89	9.4
125	205	6.4	51	14	51	14	51	6.2	76	9.7	76	23	89	11.1
150	205	6.4	51	15	51	16	51	7.5	76	11.2	76	29	89	12.8
200	237	7.1	51	17	51	18	51	10.7	76	16.0	76	35	89	18.3
250	264	7.9	51	25	51	26	51	12.5	76	18.7	76	41	89	21.4
300	318	7.9	51	32	51	33	51	14.5	76	21.7	76	53	89	24.8

8 - Hole patterns require threaded bolt holes on 50 nb branch items.

FLUOROCARBON LININGS FLUOROLINE®

Instrument Tee 350 - 600

ANSI # 150

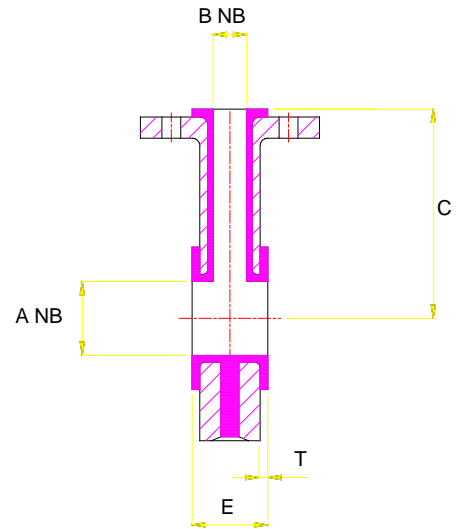
Steel Fabrication

Body plate: BS 1501 - 151 - 430A

Tube: API 5L Gr. B

Flange: ASTM A 105N

Fluoroline T - PFA - ASTM D 3307 type II



A	C	T	E(25)	~kg	E(40)	~kg	E(50)	~kg
350	330	10	90	77	90	150	90	175
400	360	10	90	100	90	195	90	230
450	380	10	90	120	90	235	90	275
500	410	10	90	148	90	290	90	340
600	470	10	90	210	90	410	90	475

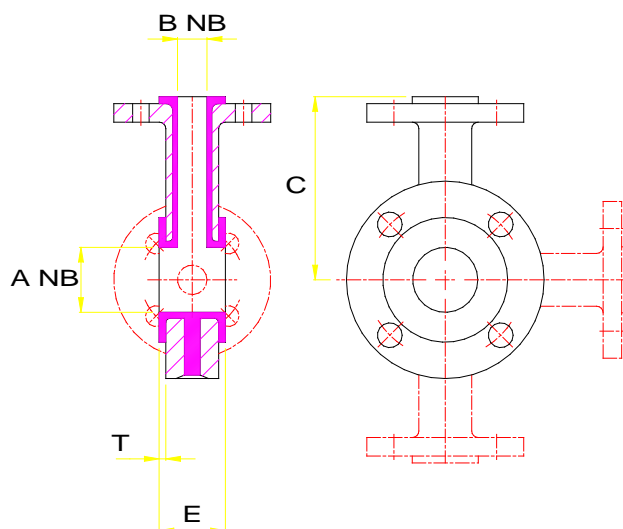
FLUOROCARBON LININGS FLUOROLINE®

Multibranch Connector 25 - 300

Full-Face
ANSI # 150

Steel Fabrication

Fluoroline T - PFA - ASTM D 3307 type II



A	C	T	E	~kg	E	~kg	E	~kg	E	~kg	E	~kg	E	~kg
mm	mm	mm	mm		mm		mm		mm		mm		mm	
			x 15	x 15	x 20	x 20	x 25	x 25	x 32	x 32	x 40	x40	x 50	x50
25	89	5.6	51	2.1	51	2.3	51	2.6	76	----	76	-----	89	----
32	102	5.6	51	2.6	51	2.9	51	3.1	76	----	76	----	89	----
40	102	5.6	51	3.6	51	3.7	51	4	76	5.7	76	6	89	----
50	141	5.6	51	4.5	51	4.6	51	4.9	76	7.1	76	7.3	89	----
65	160	5.6	51	5.7	51	5.9	51	6.2	76	9	76	9.3	89	12
80	160	5.6	51	6.8	51	7	51	7.3	76	11	76	11	89	14
100*	179	6.4	51	9.3	51	9.5	51	10	76	15	76	15	89	19
125	205	6.4	51	11	51	11	51	12	76	17	76	18	89	22
150	205	7.1	51	12	51	12	51	13	76	19	76	19	89	24
200	237	7.9	51	18	51	18	51	18	76	27	76	28	89	34
250	264	7.9	51	28	51	29	51	28	76	44	76	45	89	53
300	318	7.9	51	31	51	32	51	31	76	49	76	49	89	60

8 - Hole patterns require threaded bolt holes on 50 nb branch items.

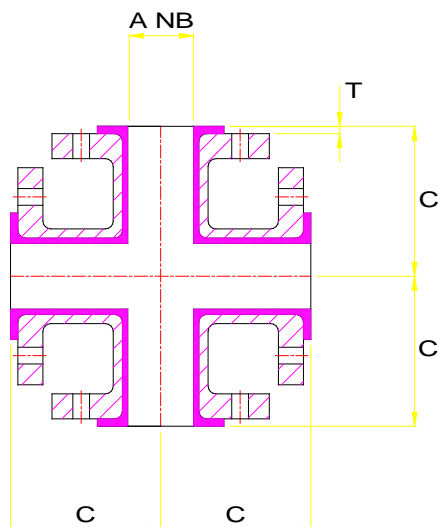
FLUOROCARBON LININGS FLUOROLINE®

Equal Cross 15 – 250

ANSI #150

S.G. Iron - EN-GJS-400-18-LT
Cast Steel - ASTM A 216 WCB
Steel Fabrication

Fluoroline T - PFA - ASTM D 3307 type II
Fluoroline K - PVDF - ASTM D 3222
Fluoroline P - Polypropylene - ASTM D 4101



A mm	C mm	T mm	~kg
15	65	2.9	3.1
20	75	2.9	3.9
25	89	5.6	5.4
40	102	5.6	8.6
50	114	5.6	13
80	140	5.6	23
100	165	6.4	39
150	203	7.1	66
200	229	7.9	99
250	279	7.9	161

FLUOROCARBON LININGS

FLUOROLINE®

Equal Cross 300 - 600

ANSI # 150

Steel Fabrication

Body plate: BS 1501 - 151 - 430A

Tube: API 5L Gr. B

Flange: ASTM A 105N

Fluoroline T PTFE: ASTM D 4894 Type

A mm	C mm	T mm	~kg
300	305	8.9	T.B.A.
350	356	10	T.B.A.
400	381	10	T.B.A.
450	419	10	T.B.A.
500	457	10	T.B.A.
600	559	10	T.B.A.

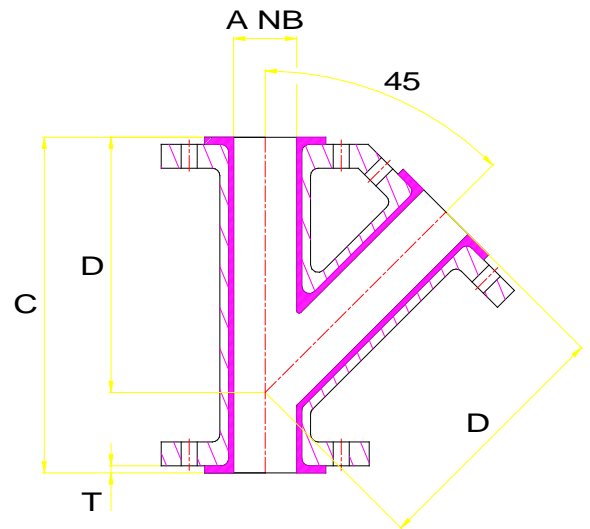
FLUOROCARBON LININGS FLUOROLINE®

Lateral Tee T 25 - 200

ANSI # 150

Cast Steel - ASTM A 216 WCB
Steel Fabrication

Fluoroline T - PFA - ASTM D 3307 type II
Fluoroline K - PVDF - ASTM D 3222
Fluoroline P - Polypropylene - ASTM D 4101



A mm	C mm	D mm	T mm	~kg
25	191	146	5.6	5
40	229	178	5.6	8
50	267	203	5.6	11
80	330	254	5.6	24
100	381	305	6.4	44
150	457	368	7.1	66
200	559	445	7.9	100

A limited range of reducing laterals is also available

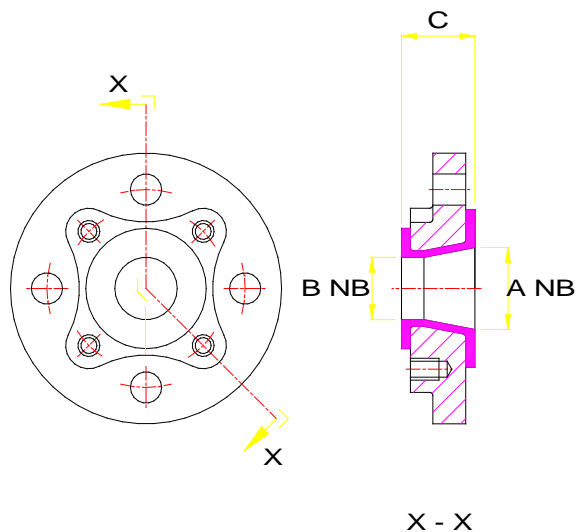
FLUOROCARBON LININGS FLUOROLINE®

Reducing Flange ,Special Scalloped type 20 - 300

ANSI # 150

Steel Fabrication BS 1501 - 151 - 430A

Fluoroline T PTFE: ASTM D 4894 Type IV & D
4895 Type III



A	B1	B2	B3	B4	B5	B6	B7	C mm	T mm	Kg
20	15							44	3	0.8
25	20	15						44	3	1.2
32	25	20	15					44	3	1.5
40	32	25	20	15				44	3	2
50	40	32	25	20	15			44	3	3
65	50	40	32	25	20	15		44	3	4
80	65	50	40	32	25	20	15	44	3	5
100	80	65	50	40	32	25	20	48	5	7
125	100	80	65	50	40	32	25	51	5	8
150	125	100	80	65	50	40	32	51	5	11
200	150	125	100	80	65	50	40	51	6	17
250	200	150	125	100	80	65	50	64	6	27
300	250	200	150	125	100	80	65	70	8	42

Major flange diameter - clearance holes
Minor flange diameter - threaded holes
Holes on/off centre.

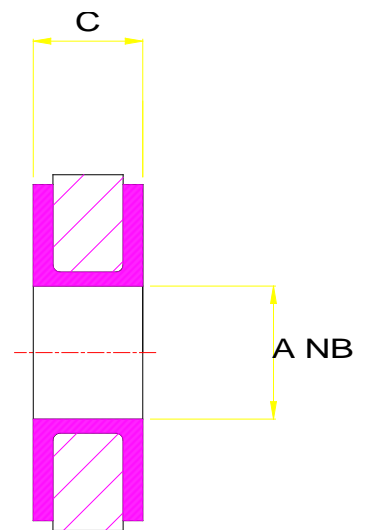
FLUOROCARBON LININGS FLUOROLINE®

Lined Spacer 15 - 300 WBC

ANSI # 150

Carbon Steel

Fluoroline T PTFE: ASTM D 4894 Type IV & D 4895 Type III



A mm	C mm min
15	12
20	12
25	12
32	12
40	12
50	12
65	12
80	12
100	12
125	12
150	12
200	12
250	12
300	12

FLUOROCARBON LININGS FLUOROLINE®

Blind Flange 15 - 300

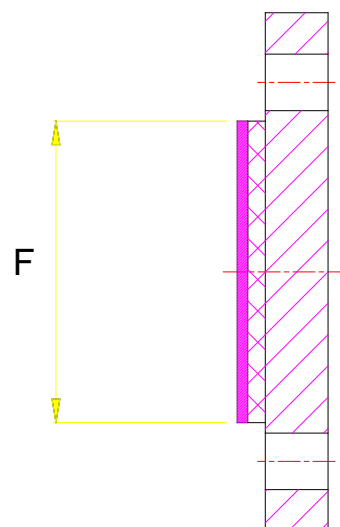
ANSI # 150

Steel Fabrication: ASTM A 105N

Fluoroline T PTFE: ASTM D 4894 Type

Fluoroline K - PVDF - ASTM D 3222

Fluoroline P - Polypropylene - ASTM D 4101



A mm	F mm
15	35
20	43
25	51
32	64
40	73
50	92
65	105
80	127
100	157
125	186
150	216
200	270
250	324
300	381

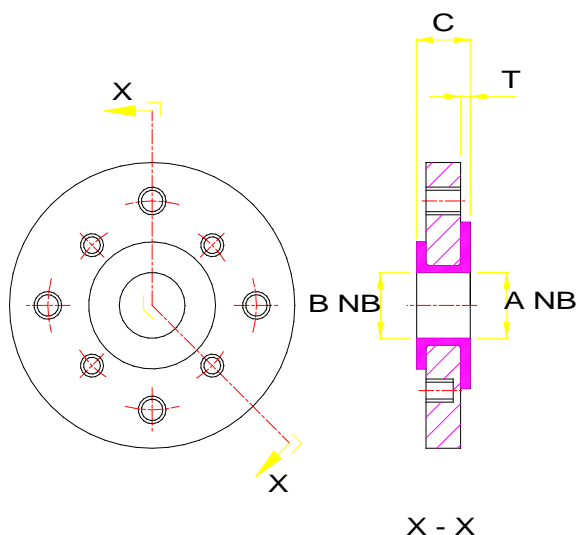
T - bonded linings. K & P - full face, non-bonded linings.

FLUOROCARBON LININGS FLUOROLINE®

Reducing Flange Parallel/Tapered 20 - 300

ANSI # 150

Parallel Bore shown



Steel Fabrication

Fluoroline T PTFE: ASTM D 4894 Type IV & D 4895 Type III

Fluoroline T - PFA - ASTM D 3307 type II

Fluoroline K - PVDF - ASTM D 3222

Fluoroline P - Polypropylene - ASTM D 4101

A mm	B mm	C mm	X	T mm	~kg
20	15	25	@	3	1.5
25	15	25	@	3	1.5
25	20	25	@	3	1.5
32	15	25	@	3	1.5
32	20	25	@	3	1.5
32	25	25	@	3	1.5
40	15	25	@	3	2.1
40	20	25	@	3	2.1
40	25	25	@	3	2.1
40	32	25	@	3	2.1
50	15	25	@	3	3
50	20	25	@	3	3

A mm	B mm	C mm	X	T mm	~kg
50	25	25	@	3	3
50	32	25	@	3	3
50	40	25	@	3	3
65	15	30	@	3	4.5
65	20	30	@	3	4.5
65	25	30	@	3	4.5
65	32	30	@	3	4.5
65	40	30	@	3	4.5
65	50	30	@	3	4.5
80	15	30	@	3	6
80	20	30	@	3	6
80	25	30	@	3	6

- @ = bolt holes on/off centres
- # = bolt holes straddle centre lines
- c = clearance holes on major diameter

FLUOROCARBON LININGS FLUOROLINE®

Reducing Flange Parallel/Tapered cont.

A mm	B mm	C mm	X	T mm	~kg	A mm	B mm	C mm	X	T mm	~kg
80	32	30	@	6	6.1	200	40	35	# c	7	25
80	40	30	@	6	6.1	200	50	35	# c	7	25
80	50	30	@	6	6.1	200	65	35	# c	7	25
80	65	30	@	6	6.1	200	80	35	# c	7	25
100	25	30	# c	6	8.8	200	100	35	# c	7	25
100	32	30	# c	6.5	8.8	200	150	35	#	7.5	25
100	40	30	# c	6.5	8.8	250	25	35	#	8	36
100	50	30	# c	6.5	8.8	250	32	35	# c	8	36
100	65	30	@	6.5	8.8	250	40	35	# c	8	36
100	80	30	@	6.5	8.8	250	50	35	# c	8	36
125	25	35	# c	6.5	11	250	65	35	# c	8	36
125	32	35	# c	6.5	11	250	80	35	# c	8	36
125	40	35	# c	6.5	11	250	100	35	# c	8	36
125	50	35	# c	6.5	11	250	125	35	# c	8	36
125	65	35	# c	6.5	11	250	150	35	# c	8.5	36
125	80	35	# c	6.5	11	250	200	35	#	9	36
125	100	35	@	6.5	11	300	25	40	# c	9	50
150	25	35	# c	6.5	13.3	300	32	40	# c	9	50
150	32	35	# c	6.5	13.3	300	40	40	# c	9	50
150	40	35	# c	6.5	13.3	300	50	40	# c	9	50
150	50	35	# c	6.5	13.3	300	65	40	# c	9	50
150	65	35	# c	6.5	13.3	300	80	40	# c	9	50
150	80	35	# c	6.5	13.3	300	100	40	# c	9	50
150	100	35	# c	6.5	13.3	300	125	40	# c	9	50
150	125	35	#	7	13.3	300	150	40	# c	9	50
200	25	35	#	7	25	300	200	40	# c	9	50
200	32	35	# c	7	25	300	250	40	#	9	50

- @ = bolt holes on/off centres
= bolt holes straddle centre lines
c = clearance holes on major diameter

FLUOROCARBON LININGS
FLUOROLINE®

Reducing Flange Parallel/Tapered cont.

A mm	B mm	C mm	X	T mm	~kg
350	150	50	C	10	70
	200	50	C	10	70
	250	50	#	10	65
	300	50	@	10	60
400	150	55	C	10	90
	200	55	C	10	85
	250	55	C	10	80
	300	55	@	10	80
	350	55	@	10	70
450	200	55	C	10	100
	250	55	C	10	100
	300	55	#	10	95
	350	55	@	10	85
	400	55	@	10	75
500	250	55	C	10	120
	300	55	C	10	115
	350	55	#	10	110
	400	55	@	10	95
	450	55	@	10	85
600	300	55	C	10	165
	350	55	C	10	155
	400	55	C	10	145
	450	55	#	10	135
	500	55	@	10	120

- @ = bolt holes on/off centres
- # = bolt holes straddle centre lines
- c = clearance holes on major diameter

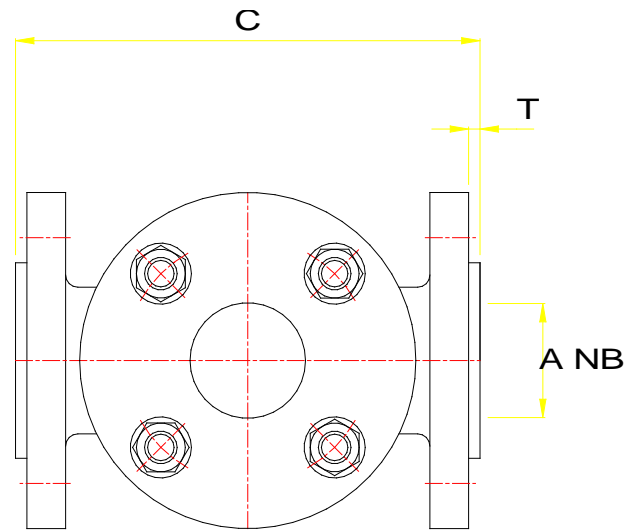
FLUOROCARBON LININGS FLUOROLINE®

Sight Glass 25 - 200

ANSI # 150

Cast Steel - ASTM A 216 WCB
Steel Fabrication

Fluoroline T - PFA - ASTM D 3307 type II
Fluoroline K - PVDF - ASTM D 3222
Fluoroline P - Polypropylene - ASTM D 4101



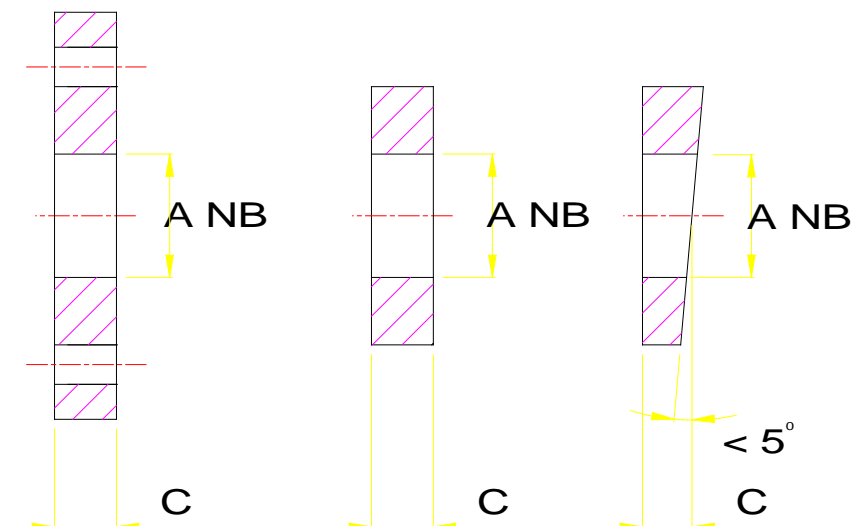
A mm	C mm	T mm	~kg
25	178	5.6	3.8
40	203	5.6	6.1
50	229	5.6	10.2
80	279	5.6	21
100	330	6.4	38
150	406	7.1	70
200	458	7.9	95
250*	558	7.9	125
300*	610	9.5	150

* Have reduced 150 mm size lenses

FLUOROCARBON LININGS
FLUOROLINE®

Solid Spacer (I), (II), (III) 15 - 300

ANSI # 150



Fluoroline T PTFE: ASTM D 4894 Type
 Fluoroline K - PVDF - ASTM D 3222
 Fluoroline P - Polypropylene - ASTM D 4101

A mm	C mm max.	C _{Taper}
15	25	20
20	25	20
25	25	20
32	25	20
40	25	20
50	25	20
65	25	20
80	25	20
100	25	20
125	25	20
150	25	20
200	25	25
250	25	25
300	25	30